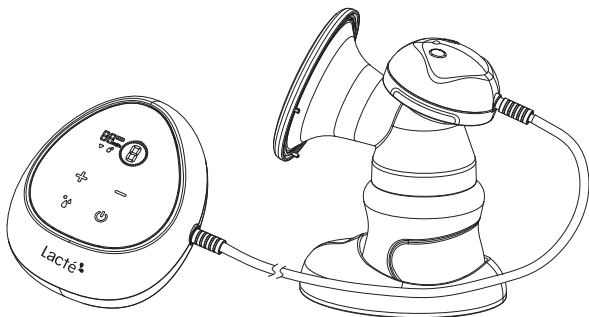


Lacté

The Milk Masters

SOLO2 RECHARGEABLE BREASTPUMP





CONGRATULATIONS!

Thank you for choosing Lacté Solo2 Rechargeable Breastpump. It has been known that breastmilk is the best natural food for your baby. With our collaboration with the breastfeeding experts and research with the lovely breastfeeding mothers who are determined to give the best to their babies, just like you, Lacté fulfils the breastfeeding mothers' needs where the circumstances do not make breastfeeding possible. Milking made easy.

Lacté Solo2 Rechargeable Breastpump – Unrivalled features at its price point

- Rechargeable Battery
- 2nd Gen Soft Breastshield with only 4-piece Assembly
- Closed System with Anti-backflow
- Optional Breastshield Funnel Size: 21mm, 25mm, 29mm
- 2 Phase Expression – Stimulation & Expression Phase with Memory
- 9 Steps Suction Control

Intended Use

Lacté Solo2 Rechargeable Breastpump is used to express milk from the breasts of lactating women. The Breastpump may be used to relieve engorgement, a painful condition whereby the breasts are overfull, possibly preventing a proper latch by the infant. A Breastpump may also be used in the event if an Infant does not latch properly for direct breastfeeding and the mother still desires the benefits of breast milk.



TABLE OF CONTENTS

Congratulations	i
Intended Use	i
Important Safety Information	1
Product Description	2
Preparing the Pump	3-4
Expression	4-5
Storing and thawing Breastmilk	6
Cleaning	7
Troubleshooting	8
Technical Data	8
Warranty	9

IMPORTANT SAFETY INFORMATION

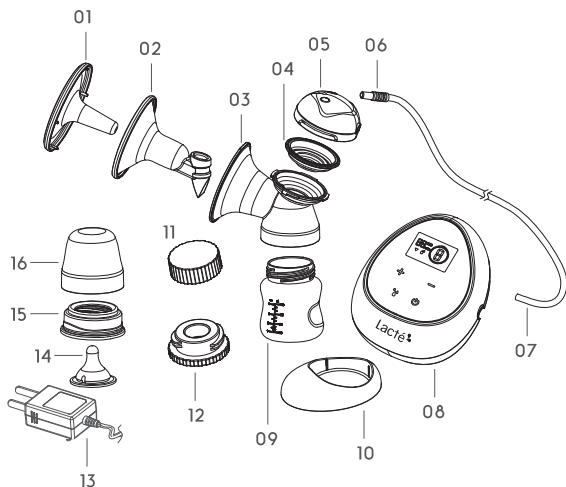
Failure to follow these instructions/ safety information can lead to danger from the device.

- Unplug the AC adapter from wall socket outlet when the pump is not in use.
- Do not leave the Breastpump unattended when plugged into a power source.
- Keep the device dry and do not immerse in water.
- Do not reach for an electrical device If It has fallen into water. Unplug immediately.
- Repairs must be conducted by authorised service agencies.

Warning

- This is a single user product. Use by more than one person may present a health risk.
- Supervision is required when the breastpump is used in the vicinity of children.
- Use the breastpump only for its intended use as described in this manual.
- Do not use the breastpump while sleeping or overly drowsy.
- Do not operate the breastpump if it is physically damaged or abused.
- Do not place the breastpump near any appliances generating a strong magnetic field.
- Do not place the breastpump under direct sunlight.

PRODUCT DESCRIPTION



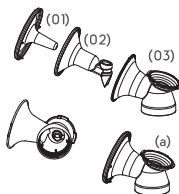
01 Dust Cover	x1	09 120ml Wide Neck Bottle	x1
02 Silicone Breastshield	x1	10 Bottle Stand	x1
03 Main Breastshield Body	x1	11 Bottle Lid	x1
04 Diaphragm	x1	12 Bottle Adapter	x1
05 Cap	x1	13 Power Adapter	x1
06 Tubing Connector	x2	14 Nipple Teat	x1
07 Tubing	x1	15 Bottle Ring	x1
08 Main Pump Unit	x1	16 Bottle Cap	x1

PREPARING THE PUMP

Warning

The Lacté Solo2 Rechargeable Breastpump comes pre-assembled, however you need to re-assemble it after each cleaning. Before assembling, the parts which come in contact with breast milk directly, such as milk bottle, silicone breastshield, breastshield body, diaphragm, bottle lid, disc collar (if use standard bottle) must be cleaned and sterilized before each use.

01

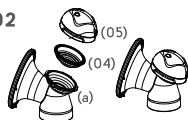


Assembling Expression Collection Kit

Insert the breastshield(02) to the breastshield body(03). You will now have a complete Expression Collection Kit(a).

NOTE: Please remove the dust cover when start pumping.

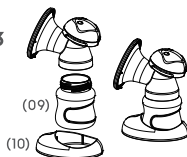
02



Assembling the Diaphragm:

Insert the diaphragm(04) on the top portion of the Expression Collection Kit(a). Screw the cap(05) tightly to prevent air leak as illustrated.

03



Assembling the Bottle and Bottle Stand:

Assemble the assembled breastshield body onto the bottle(09). Affix the assembled Collection Kit to the bottle stand(10).

PREPARING THE PUMP

Connecting Expression Collection Kit and Main Pump Unit

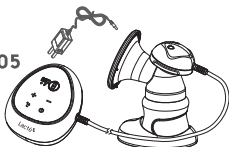
04



Connecting Tubing

Connect one end of the Tubing to Expression Collection Kit and the other end to the Main Pump Unit.

05

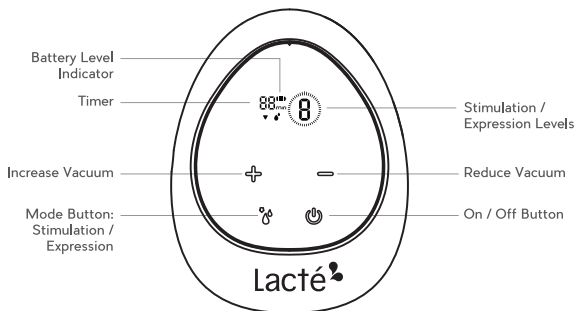


Connecting Power Source

Plug the AC Adapter into the wall socket outlet. Attach the Power Cord to Main Pump Unit as illustrated.

EXPRESSION

Control Panel Description



- Remove the dust cover and place the breast shield on your breast so that your nipple is properly centered in the tunnel.
- Press the On/Off Button to switch on the breast pump: the 30 minutes timer will start countdown and the pump will begin with Stimulation Phase at Level 1 for 2 minutes before entering into the Expression Phase. When the second time you switch back to Stimulation Phase, the pump will automatically switch to Expression Phase after 2 minutes again. When the third time you switch back to Stimulation Phase again, the pump will no longer enter Expression Phase automatically.
- Under the automatically switch function, when you are:
 - On Stimulation Phase level 1-3, the pump will enter Expression Phase level 1 after 2 minutes.
 - On Stimulation Phase level 4-6, the pump will enter Expression Phase level 2 after 2 minutes.
 - On Stimulation Phase level 7-9, the pump will enter Expression Phase level 3 after 2 minutes.
- Press the Phase Button to toggle between Stimulation and Expression phase and memorize the setting of last operation.
- The vacuum can be adjusted in every phase to your desired strength. Comfort vacuum: Use the + button to increase the vacuum until it is slightly unpleasant. Then press - button to reduce minimally.
- Please fully charge the lithium-ion battery at least 4 hours especially for first use. The pump can continue to work up to 2-3 cycles once the lithium-ion battery is fully charged. In order to prolong the breast pump's service life, each charging time shall not be more than 6 hours.

The built-in battery is not removable. Connect the pump unit to AC adapter to charge. When the battery is full, the pump unit will turn off automatically.

STORING AND THAWING BREASTMILK

You should store and thaw your breastmilk correctly. This is the only way you can be sure that all the important nutrients are preserved and bacterial contamination is minimised.

Guidelines for storing | thawing breastmilk

Lacté recommends using the following guidelines for storing and thawing Breastmilk for Healthy Term Babies.

	Freshly expressed breastmilk	Thawed breastmilk (previously frozen)
Room temperature	Do not store at room temperature	Do not store
Refrigerator	3 - 5 days at approx. 4°C	10 hours
Refrigerator freezer compartment	6 months at approx. -16°C	Do not refreeze after thawing!
Freezer	12 months at approx. -18°C	Do not refreeze after thawing!

Tips for freezing / thawing breastmilk:

- Never fill bottles/bags more than full to allow space for possible expansion. Label the bottle/bag with the date you expressed the milk.
- Do not store breastmilk in the refrigerator door. Store it in the lower back area of the refrigerator, where the temperature is coolest.
- Thaw frozen breastmilk in the refrigerator overnight or hold the bottle or bag under running warm water (max. 37°C)
- Shake the bottle or bag gently to blend any fat that has separated.
- Do not thaw frozen breastmilk in a microwave oven or in a pan of boiling water (danger of burning).

Before using your Lacté Breastpump, disassemble, wash and sterilise all parts of the breastshield kit.

- Do NOT sterilise tubing.
- Completely air-dry or towel-dry before assembly for next use.

Partially dry components may affect the operation of your Electric Breastpump. Please ensure that all parts are completely dry before use.

Before Each Use:

- Wash your hands thoroughly with soap and warm water before handling the Breastshield Kit, the Electric Breastpump or any other attachments.
- Make sure the Breastshield Kit is cleaned, sterilised and dried.
- Ensure the tubing is free from any liquid. Do NOT operate your Lacté Breastpump if any liquid is visible in the tubing. (See Tubing Cleaning Instructions on page 7.)

General Cleaning Instruction:

- Set aside the tubing. Under the normal working conditions of the pump, the diaphragm would prevent the back-flow of milk. Therefore, these items do not need to be washed. In case of finding any liquid or liquid vapour inside the tubing, follow the Tubing Cleaning Instruction carefully before use.
- All parts of the Breastshield Kit may be cleaned in the upper compartment of your dishwasher or hand washed with dish soap in hot water. Do NOT use solvents or abrasives.
- Rinse with hot, clean water.
- To clean the Pump Base, wipe the Base with a damp cloth, using only water or water mixed with a mild soap

Tubing Cleaning Instructions:

- Wipe the outside of the tubing with a clean, damp cloth. Avoid getting water or other fluids inside the tubing.
- If liquids are found inside tubing, rinse the tubing with clean hot water. Hang to AIR DRY COMPLETELY BEFORE USING. Do NOT insert any object into tubing.

Note: Before each use, visually inspect the individual components for cracks, chips, tears, discoloration or deterioration; as they may affect the efficiency of the Lacté Breastpump. In the event that damage to the device is observed, please discontinue use until the parts have been replaced.

If there is low or no suction

- Check all connections if they are all properly attached at all connection points.
- Check the valve membrane if it is seated securely and flat on the valve body.
- Hold the breastshield, not the connector or bottle, while expressing.
- Ensure the breastshield forms a complete seal around the breast.
- There should not be any water in the tubing.
- All components must be completely dry.

The pump becomes wet

- Unplug from the socket.
- Switch off the pump.
- Do not place the pump upside down. Control panel must point upwards.
- Store the pump in a dry, warm place for 24 hours.

Note:

- Do not expose the pump to direct sunlight.
- Do not accelerate the drying process by use of heat.

The pump does not switch on:

Check if the pump is properly charged.

Contact your Lacté dealer or the store where you bought the pump.

TECHNICAL DATA

· Model	SP03
· Battery	Li-ion 3.7 V~1100mAh
Power Input	AC 100~240V~50/60Hz
Power Output	DC 5V / 1A
· Power Rating	5W
· Stimulation Speed	100T / Min
· Stimulating Pressure	Max -0.015 MPa, 9 levels vacuum
· Expression Speed	26~60T / Min
· Expression Pressure	Max -0.032 MPa, 9 levels vacuum
· Timer	30 minutes
· Overall Noise	≤60dB(A)
· Operating Conditions	5~40°C, RH ≤90%
· Electric Shock Protection	AC adapter Class II, Host machine Class III

The Lacté Solo2 Rechargeable Breastpump ("Product") is warranted to the original user – whether institutional or individual ("First User") – only. From the date of the First User's purchase of the product, GMTA Asia Sdn. Bhd. ("GMTA") warrants the Product to the First User against defects in material or workmanship for a period of one year for the pump mechanism.

GMTA sole obligation under this limited warranty shall be to repair or replace, at GMTA option, any Product that is determined to be defective by GMTA and determined to be covered by this express limited warranty. Repair or replacement under this limited warranty is the sole and exclusive remedy of the First User. Proof of purchase in the form of receipted invoice or bill of sale evidencing that the Product is within the warranty period must be presented to obtain warranty service. This limited warranty is extended by GMTA ONLY to the First User and is not assignable or transferable.

EXCEPT TO THE EXTENT PROHIBITED BY APPLICABLE LAW, ANY IMPLIED WARRANTY OF MERCHANTABILITY OR FITNESS FOR A PARTICULAR PURPOSE ON THE PRODUCT IS HEREBY DISCLAIMED. GMTA SHALL NOT BE LIABLE FOR ANY INCIDENTAL, CONSEQUENTIAL, SPECIAL OR PUNITIVE DAMAGES OF ANY KIND FOR BREACH OF THE EXPRESS LIMITED WARRANTY ON THE PRODUCT OR ANY WARRANTY IMPLIED BY OPERATION OF LAW. OTHER THAN THE LIMITED WARRANTY SET FORTH ABOVE, THERE ARE NO OTHER WARRANTIES THAT ACCOMPANY THIS PRODUCT AND ANY ORAL, WRITTEN OR ANY OTHER REPRESENTATION OF ANY KIND IS HEREBY DISCLAIMED.

Non-Applicable of Warranty

In addition to any other limitations on the warranty mentioned above, the warranty shall expire and be of no force or effect upon the occurrence of any of the following:

- (i) the cause of damage of the Product is due to improper handling or use.
- (ii) the Product is not properly maintained by the First User as determined by GMTA.
- (iii) non approved accessories or spare parts are used with the Product as determined by GMTA.

If any of the above occurs, GMTA shall not be responsible for damage to the Product, parts thereof or Injuries arising therefrom, either directly or indirectly. The warranty terms set forth above replaces all prior warranties with respect to the purchased Product, whether in writing or otherwise. Call your local distributor or location where you purchased the Product.